

MONTHLY MEMBERSHIP PROGRESS REPORT

District 325 M

Results as of: 5/31/2024

GMT:

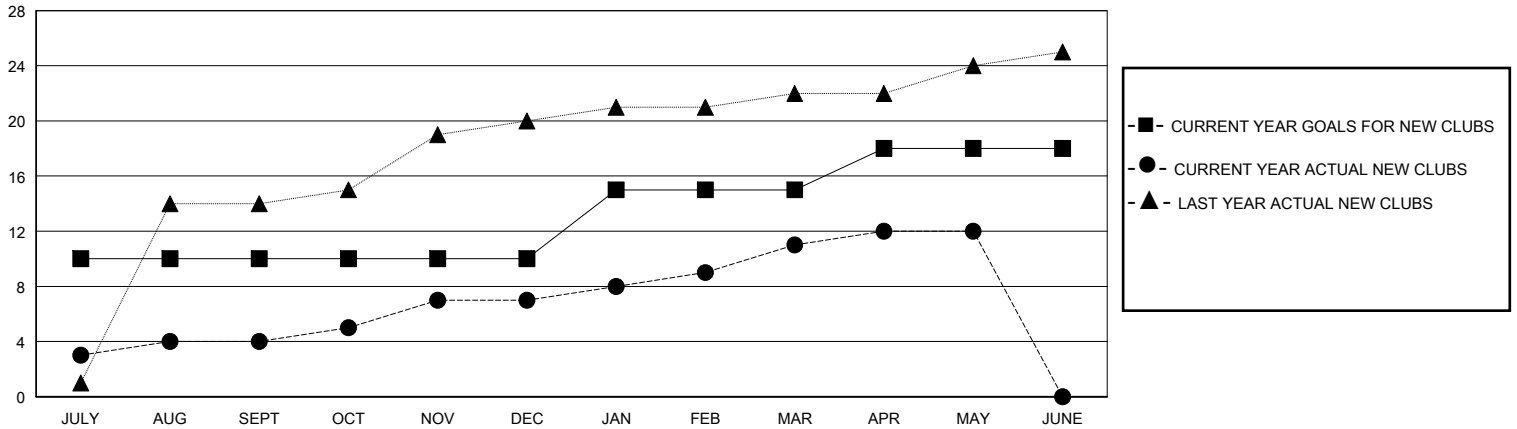
LOCATION NEPAL

GMT CA

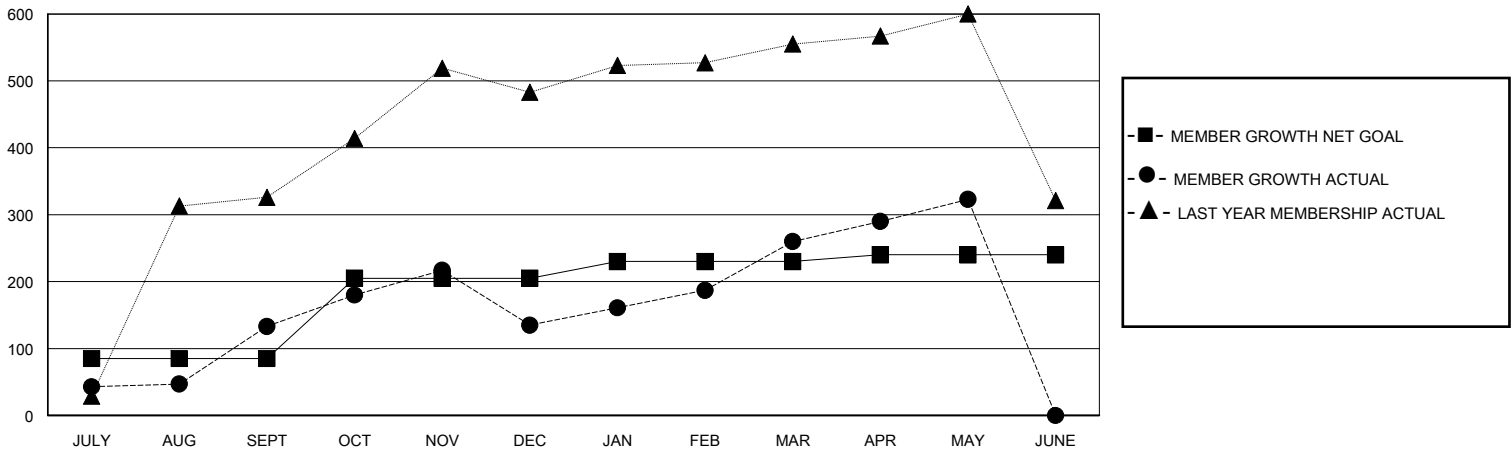
Clubs			
RESULTS FOR 2023-2024			
QUARTER	NEW CLUB GOAL	NEW CLUBS	DROPPED CLUBS
JULY/AUG/SEPT	10	4	3
OCT/NOV/DEC	0	3	8
JAN/FEB/MAR	5	4	0
APR/MAY/JUNE	3	1	1

Members			
RESULTS FOR 2023-2024			
QUARTER	MEMBER GROWTH NET GOAL	MEMBER GROWTH ACTUAL	DROPPED MEMBERS ACTUAL (including transfers)
JULY/AUG/SEPT	85	266	117
OCT/NOV/DEC	120	167	153
JAN/FEB/MAR	25	215	78
APR/MAY/JUNE	10	122	36

GOALS AND ACTUAL NEW CLUBS CUMULATIVE



GOALS AND ACTUAL MEMBERS CUMULATIVE



DROPPED CLUBS: 12	
DROPPED MEMBERS	
DECEASED	0
CLUB CANCELLED	104
OTHER	279
TOTAL	383

99 CLUBS OF 147 ADDED 1 OR MORE NEW MEMBERS

GENDER DISTRIBUTION	
MALE	2,298 (68.80%)
FEMALE	1,041 (31.17%)

[CLICK HERE FOR CUMULATIVE MEMBERSHIP DATA](#)

TOTAL FAMILY UNIT MEMBERS	3,222
FAMILY MEMBERS PAYING HALF DUES	2,460